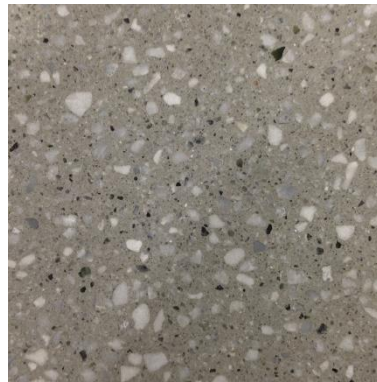


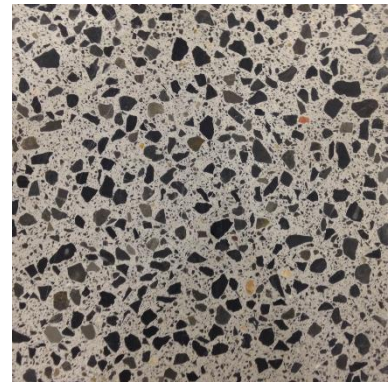
# Padovan..... European terrazzo



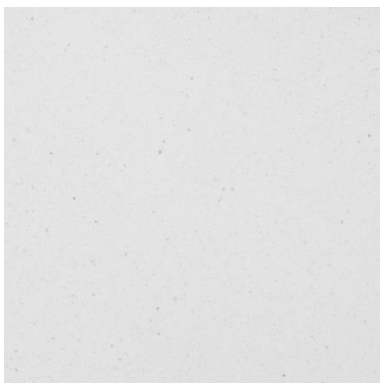
Avalonia



laurentia

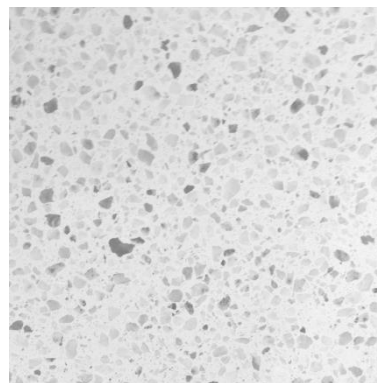


scotia



white

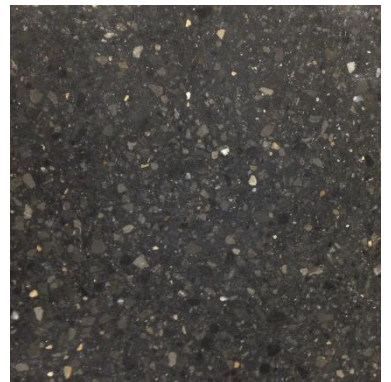
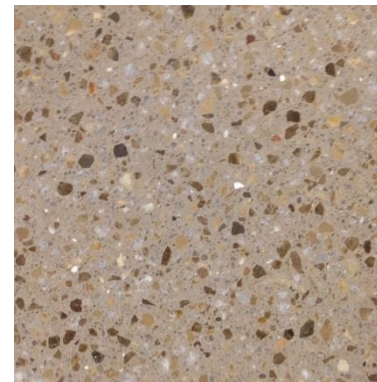
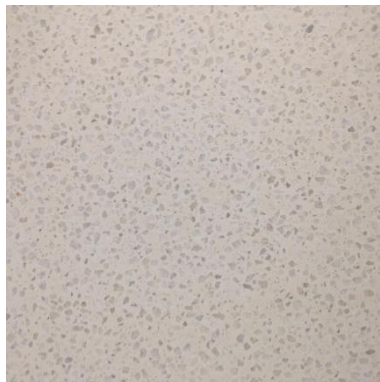
cumbria



nuna white



serbian



Premaux

rodinia

pangea

[www.oceanandmerchant.com](http://www.oceanandmerchant.com)



## **PADOVAN EUROPEAN TERRAZZO INFORMATION**

<b>Current Size Available:</b>	410x410x21mm
<b>Current Finish Available:</b>	Honed
<b>Slip Resistance for Honed Finish:</b>	R9 / 28Y Pendulum (UNE-EN13748-1:05)

### **SPECIAL ORDER**

<b>Other Sizes Available:</b>	310x310mm / 600x410mm / 600x600mm
<b>Other Finishes Available:</b>	Polished / Brushed / Rough (bush-hammered)

### **TECHNICAL DATA (410x410x21mm)**

<b>Breaking Tension:</b>	9MPa
<b>Breaking Load:</b>	4.2 KN
<b>Abrasion Resistance:</b>	18mm
<b>Water Absorption:</b>	3.6 Wm,w(%)

### **INSTALL INFO (Product data sheets available on request)**

<b>ADHESIVE:</b>	Ardex X77 Adhesive (C2) with Ardex Ardion E90 additive
<b>GROUT:</b>	Ardex FG8 grout to suit colour

**SEALANT:** Lithofin MN Stainstop - before grouting and after grouting, ensuring excess sealant is wiped off and not allowed to dry on the surface, tiles are to be clean and dry prior to sealing

**CLEANING :** Lithofin MN Easycare & Lithofin Powerclean